

ELEV 374

CAT A,B

HAWERA

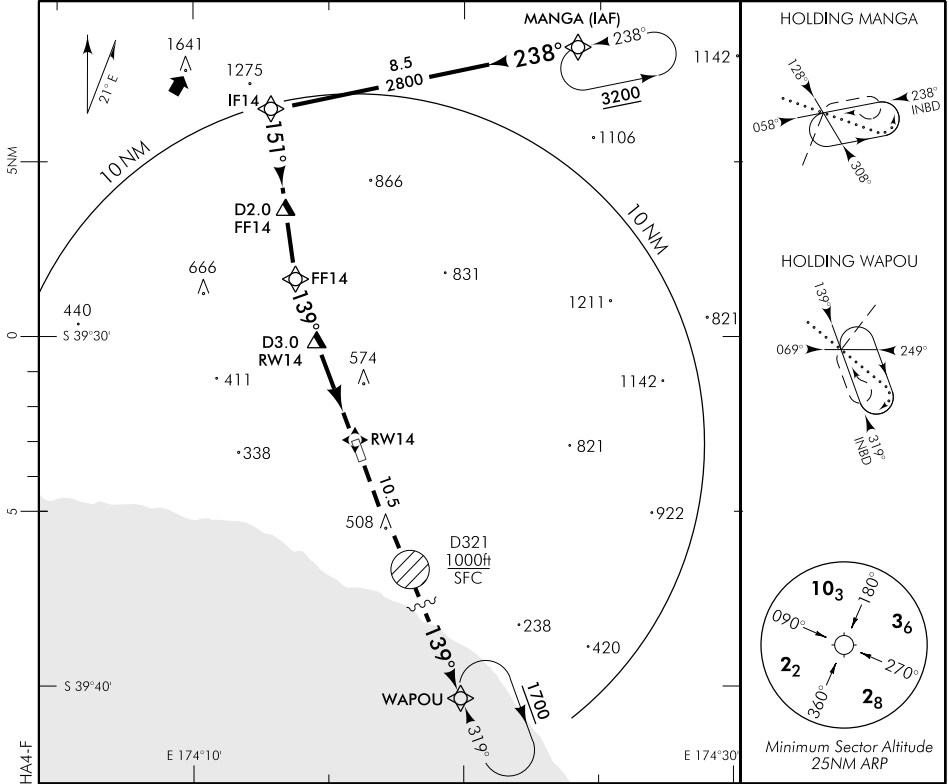
RWY 14 THR ELEV 370

RNAV (GNSS) RWY 14

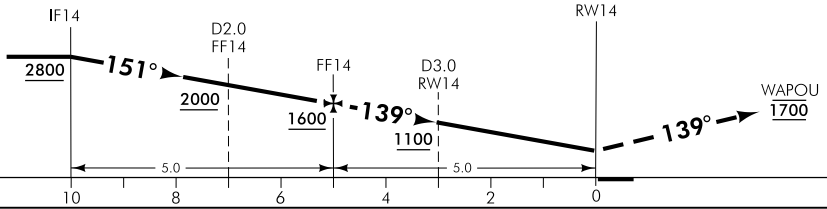
CHRISTCHURCH CONTROL: 123.7

AWIB: 123.45

UNATTENDED: 124.65



Use Hawera QNH
When not available use NP QNH
and add 140ft to all MDA's



MISSED APCH: Climb on 139° to WAPOU 1700

DISTANCE to WPT	IF14	4	3	2	1	FF14	4	3	2	1	RW14
Advisory Altitude 5%	3400	3100	2800	2500	2200	1900	1600	1300	1000	MDA	MDA
Category	A					B		C		D	
LNAV	870(496) – 2000					NA					
Circling	870(496) – 2000			920(546) – 2800			NA				

Effective: 3 JUN 10

Changes from 8 APR 10: AD PREG

ELEV 374

CAT A,B

RWY 32 THR ELEV 363

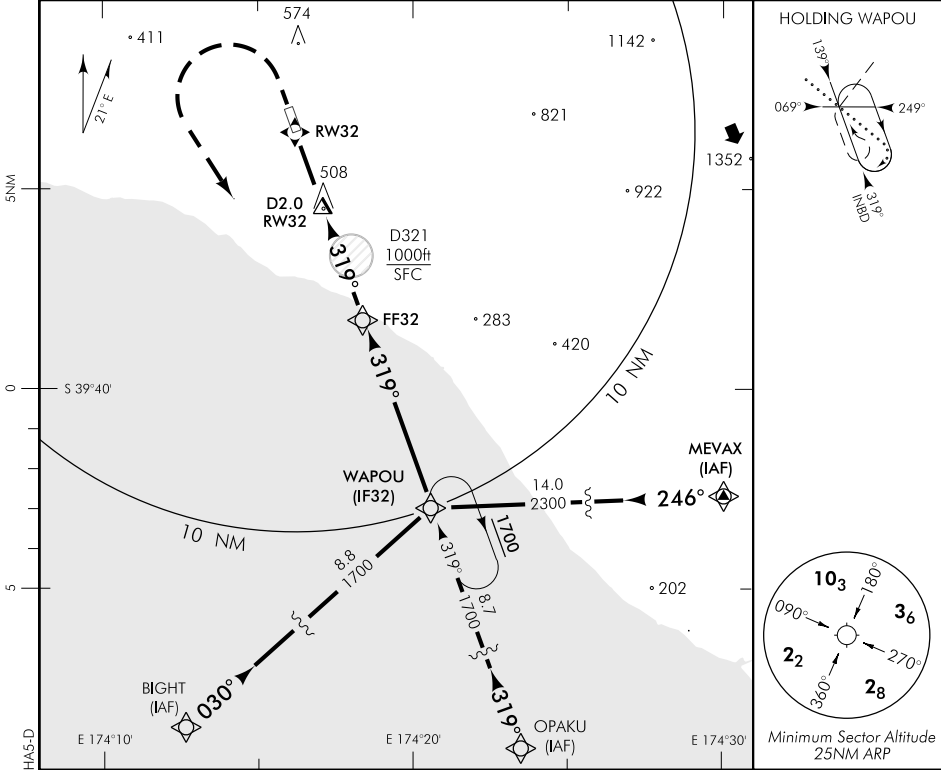
HAWERA

RNAV (GNSS) RWY 32

CHRISTCHURCH CONTROL: 123.7

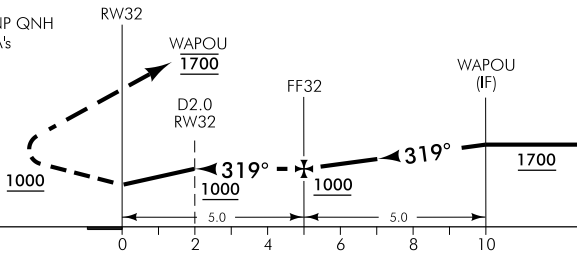
AWIB: 123.45

UNATTENDED: 124.65



Changes from 8 APR 10: AD FREQ

Use Hawera QNH
When not available use NP QNH
and add 140ft to all MDA's



MISSED APCH: Climb on 319° to 1000 turn LEFT to WAPOU 1700

DISTANCE to WPT	RW32	1	2	3	4	FF32	1	2	3	4	WAPOU
Advisory Altitude 5%	MDA	MDA	1000	1300	1600	1900	2200	2500	2800	3100	3400
Category	A			B			C		D		
LNAV	740(377) - 1600						NA				
Circling	860(486) - 1900			920(546) - 2800							

Effective: 3 JUN 10

HAWERA

RNAV (GNSS) RWY 32